

Please verify the contents of the packages!

Please read instructions entirely before starting installation

Be sure power is turned off before installing or modifying the system

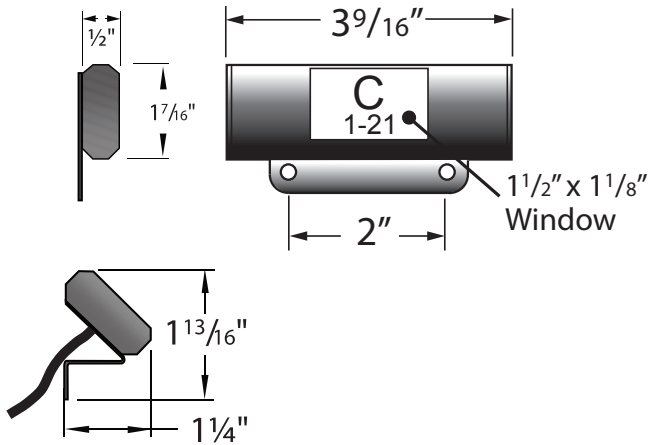
Call Tivoli, LLC tech support with questions

Caution: Monogram™ Seat Light is designed to work with listed Class 2 12V DC transformers only. Use of any other power source will cause damage, shorten the life of the fixture and will void the warranty.

Consult any and all applicable local and national codes for installation.

Do not conceal or extend exposed conductors through a building wall as per local electrical code.

Warning: With any luminaire for any application, basic safety precautions should always be followed to reduce the risk of fire, electric shock and personal injuries. This lighting system should be installed by a lighting professional.



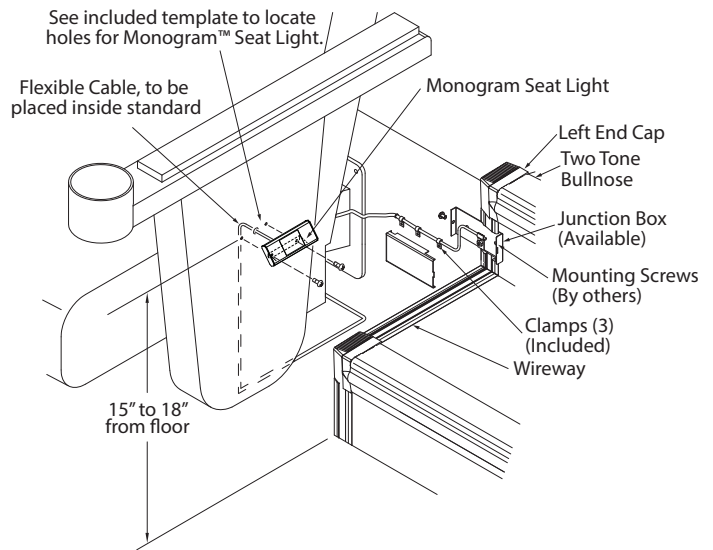
Installation Instructions

Installation with Junction Box in Riser

Step 1: Measure the height, 15 to 18 inches from floor, for location of three (3) holes to be drilled. Use template on Page 2.

Step 2: Feed flexible cable through center hole to inside of seat frame and secure at bottom of frame with clamps (3) provided.

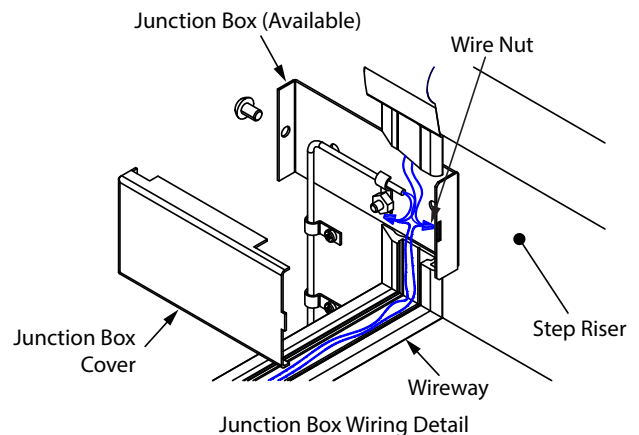
Step 3: Secure Monogram™ with #6 sheet metal screws (Included).



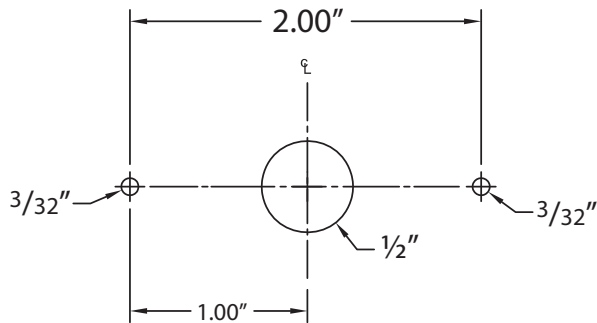
Step 4: The junction box (available separately) must align with the wireway and be mounted on the vertical rise of the step so that the cutout of the junction box lines up with the wireway, see detail. (Mounting screws by others.)

Step 5: Feed the wires from the power supply along the wireway to the junction box and make all wire connections using wire nuts.

Note: White Wire is positive (+) and the Black Wire is negative (-).



Mounting Template



Template for mounting
Monogram™ to Seat
(Full Scale)

Installation Instructions (Continued)

Installation with Junction Box on Floor

Step 1: Measure the height 15 to 18 inches from floor for the location of three (3) holes to be drilled. Please see included template (Page 1).

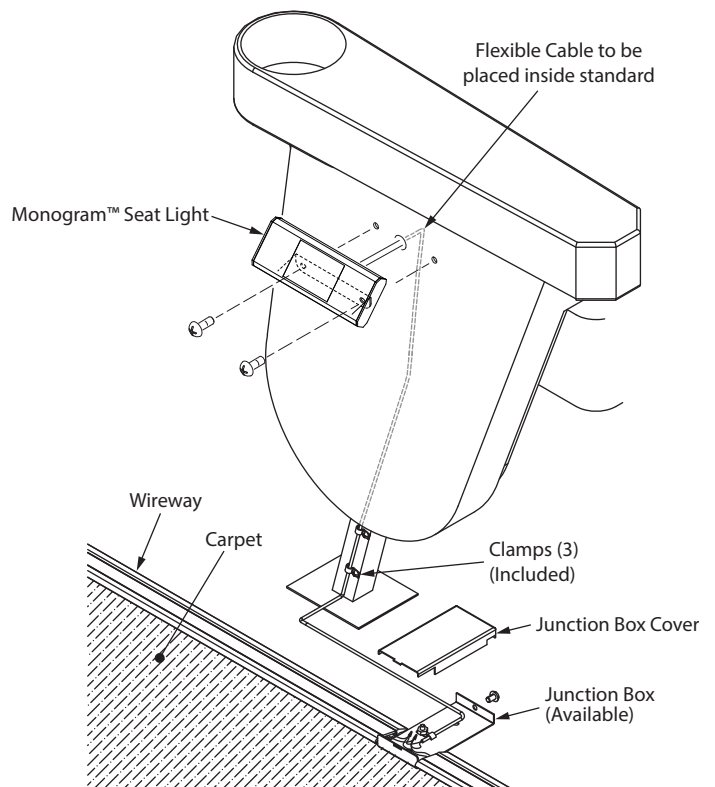
Step 2: Feed flexible cable through center hole to inside of seat frame with clamps (3) provided.

Step 3: Secure Monogram™ with #6 sheet metal screws (Included).

Step 4: The junction box (available separately) must align with the wireway and be mounted on the bare finished floor so that the cutout of the junction box lines up with the wireway (See detail). Mounting screws by others.

Step 5: Feed the wires along wireway and through the hole and flex circuit to the junction box and make wire connections using wire nuts.

Note: White Wire is positive (+) and the Black Wire is negative (-).



Installation Instructions (Continued)

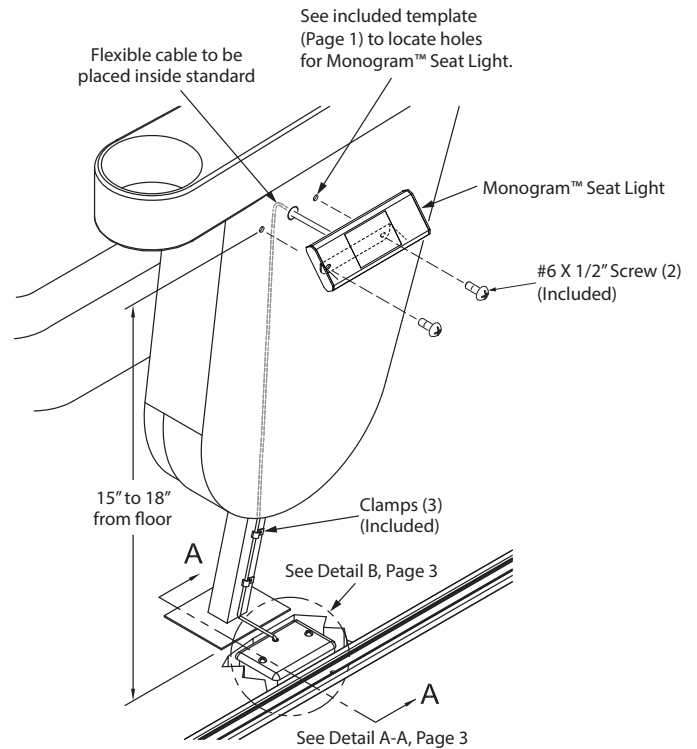
Installation with Junction Box Recessed in Floor

Step 1: The junction box and flex conduit (by others), should be placed before concrete is poured (See Section A-A Detail).

Step 2: Measure the height 15 to 18 inches from floor for the location of three (3) holes to be drilled. Please see included template (Page 1).

Step 3: Feed flexible cable through center hole to inside of seat frame with clamps (3) provided.

Step 4: Monogram™ with #6 sheet metal screws (included).

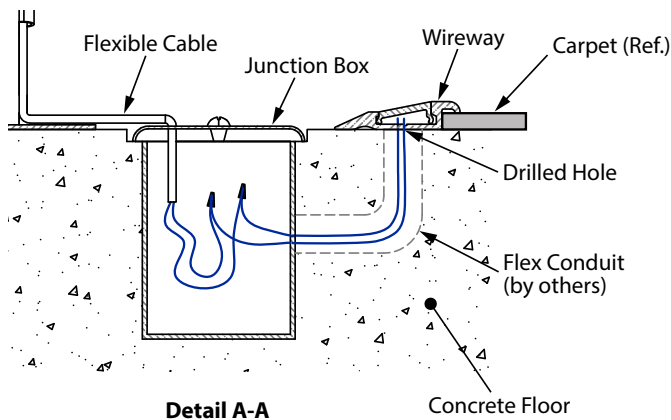
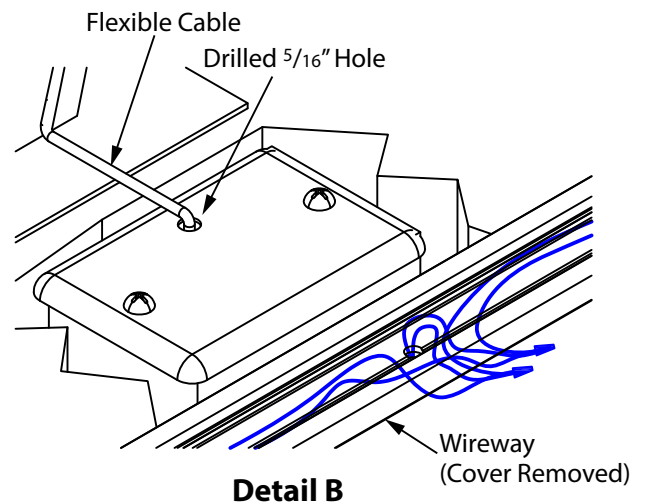


Step 5: Drill a $\frac{5}{16}$ " diameter hole into the junction box lid. Feed flexible cable through hole.

Step 6: Drill a $\frac{5}{16}$ " diameter hole into wireway extrusion. Be sure hole is aligned with flex conduit (Step 1).

Step 7: Feed the wires along wireway and through hole and flex conduit to the junction box and make wire connections using wire nuts.

Note: White Wire is positive (+) and the Black Wire is negative (-).





Wire Size Selection

In order to operate Class II lighting system properly, it is important to select wires with a right gauge to minimize significant voltage drop. Following are two charts providing a reference for determining the wire size according to the maximum connection wire length from power supply to lighting fixtures.

12V DC Class 2 Lighting System	
Wire Gauge	Max. Connection Wire Length (FT)
18	90
16	95
14	100
12	105